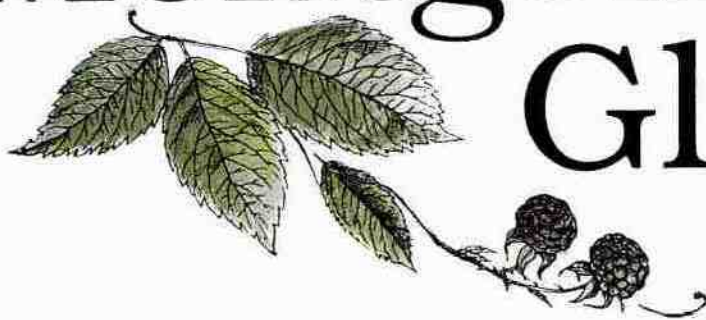
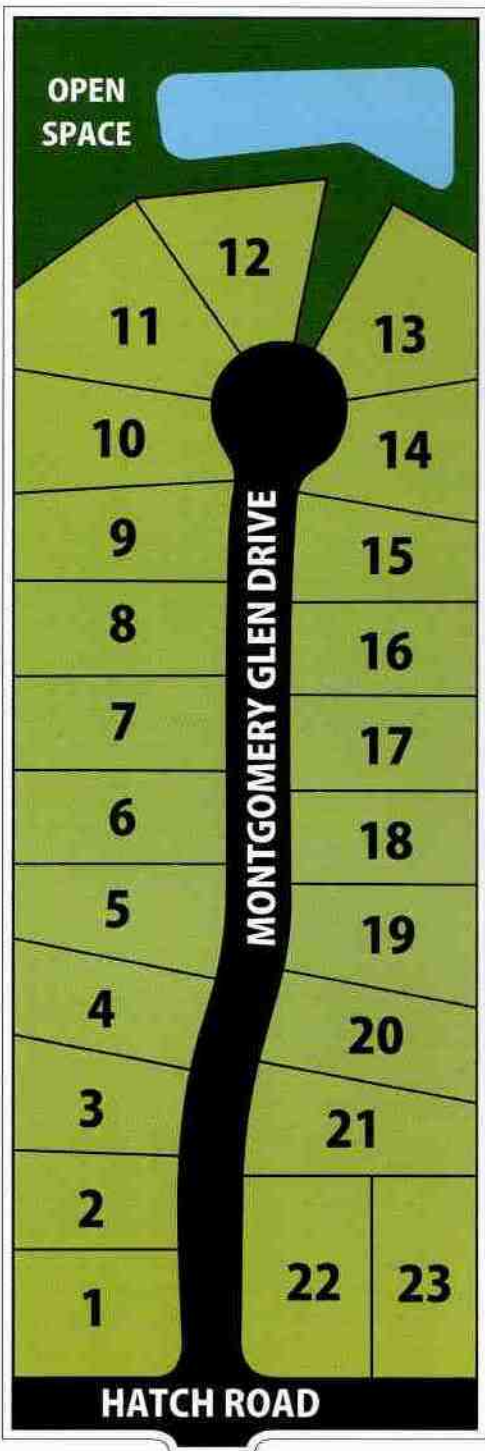
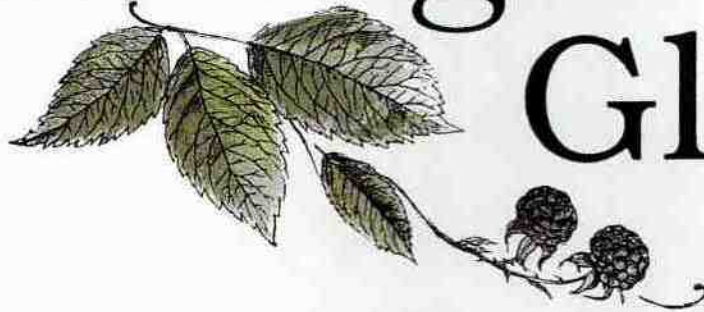


Montgomery Glen




BARONE
HOMES

Montgomery Glen



Welcome to Montgomery Glen by Barone Homes.

Montgomery Glen is conveniently located 1 mile from Route 104 which provides easy access to all of Monroe County. The site adjoins nearly 15 acres of dedicated forever wild green space with sidewalk access via a footpath for passive recreation. You can enjoy a stroll past the pond or just enjoy the wildlife. Sidewalks and street lights make this a great choice for families that enjoy a village atmosphere.

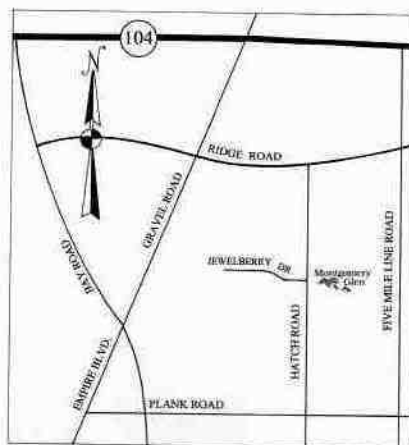
David Paine - 314-2060
Jeff Pastorella - 721-3344
www.baronehomes.com



Quality Home Features

Anderson Windows with Low "E" Glass
Full View Glass Patio Doors
Low Maintenance Exteriors
Seeded Lawn
Blacktop Binder Driveway
Hardwood Railings
Hardwood or Ceramic Foyer Floors
Custom Cabinetry
Gas Fireplace
High Security Steel Insulated Exit Doors
Appliance Package of:
Range, Dishwasher, Disposal
Tile Floors in Full Baths
Exhaust Fans in Bathrooms
Oversized Two Car Garage
Steel Insulated Garage Overhead Door
Quality Hem Fir Framing Lumber
Plywood Sheathing
Designer Grade Vinyl Siding
Central Air Conditioning
30 Year Fiberglass Roof Shingles

Energy Star Certified
Recessed Lighting
2" x 6" Exterior Walls
2 Exterior Electrical Outlets
200 Amp Underground Electric Service
No Wax Vinyl Flooring
Stain Guard Nylon Carpeting
Telephone & Cable T.V. Prewired Outlets
12 Course Basement
Tile or Hardwood Kitchen and Dinette
Front Yard Post Light (Install)
Colonial Style Interior Trim
Seamless Aluminum Gutters
Energy Saving Basement Insulation
Divided Light Grills on House Front
Superior Basement Water Proofing
Storm Sewers
Spacious Private Home Sites
Quiet Cul De Sac Home Sites
Protective Covenants
Preserved Green Space



LOCATION MAP



DAVID PAINE - 314-2060
JEFF PASTORELLA - 721-3344
1203 Ridge Road
Webster, NY 14580